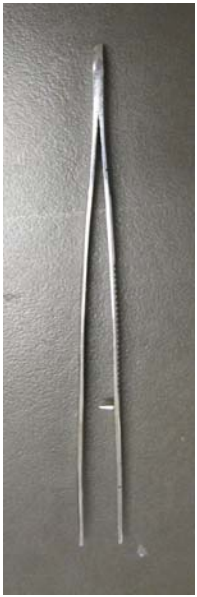


# Frog Dissection



# *Dissection Equipment*



**Forceps**



**Scissors**



**"T" Pins**



**Dissection Tray**



**Colored  
Pencils**



**Probe**



**Pair of Gloves**



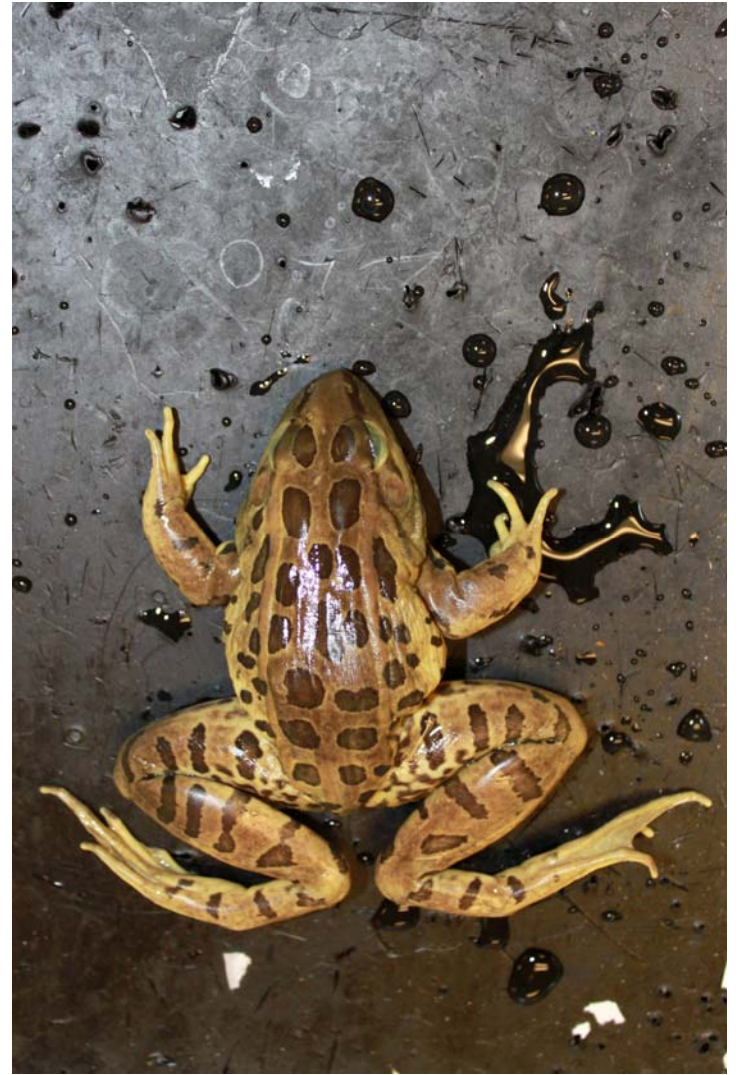
**Scalpel**





**Ventral**  
(belly side)

תפוחים ופירות אחרים



**Dorsal**  
(back side)

# External Features

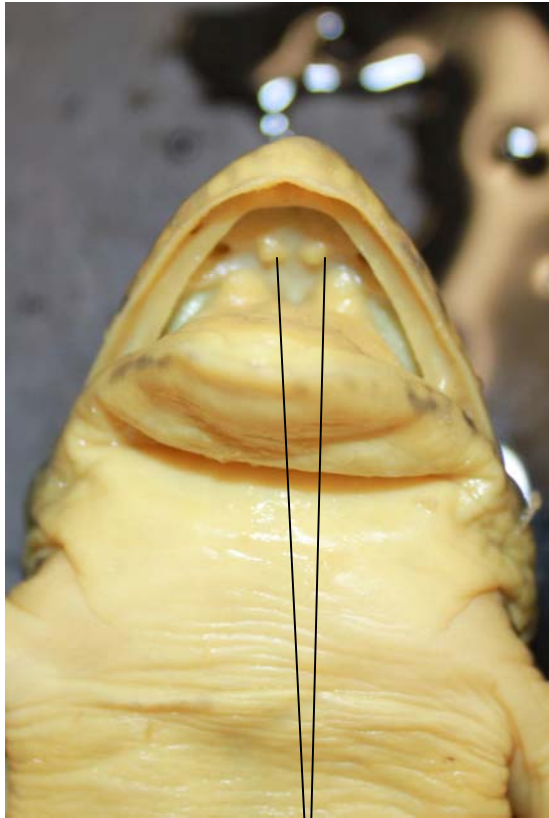


External  
Nares

Tympanum  
(circular eardrum)

Transparent Membrane (eye)





Vomerine teeth



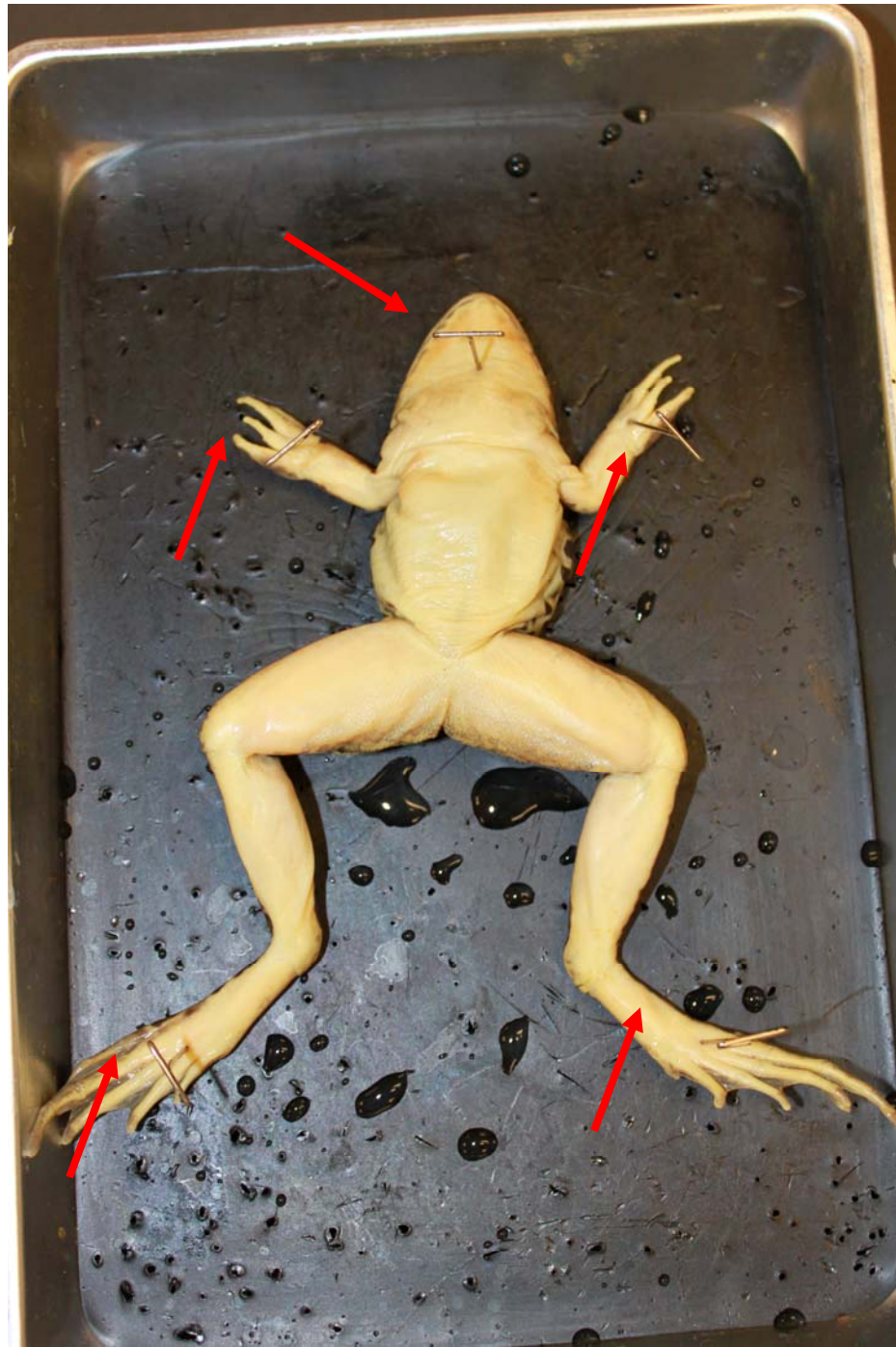
Tongue



# Pinning Out

## Use 5 pins:

- One in each limb
- One in the throat



# Making the Cut



**Using the scalpel, make a small puncture at the base of the abdomen**



**Insert the pointed end of the scissors and cut up through the skin, along the midline**



# Making the Cut



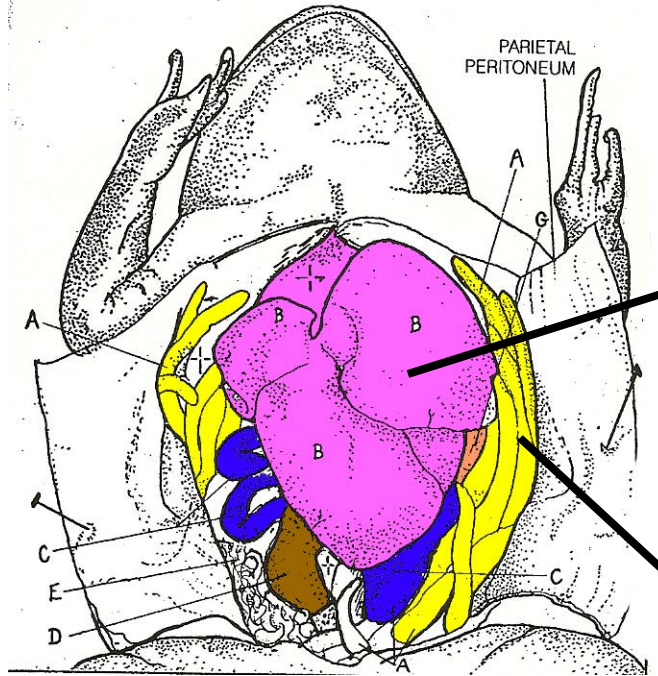
**Use the pointed end of scissors. Cut up through the midline of the abdominal muscles and through the sternum (breast bone)**



**Pin back the muscle tissue to expose the organs**

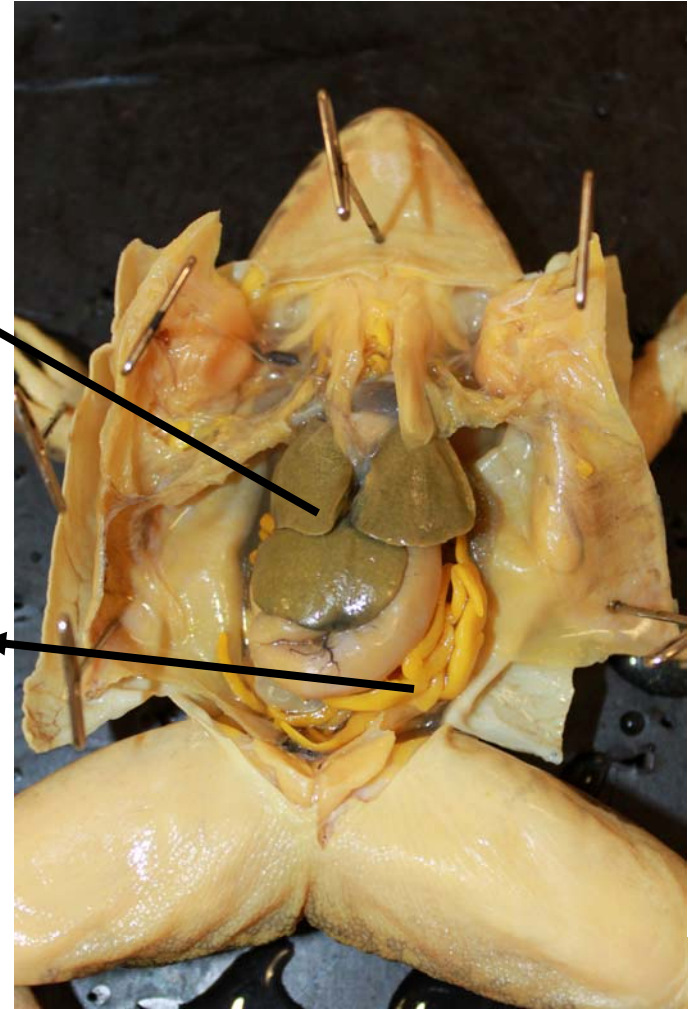


# Digestive System



Liver

Fat Body

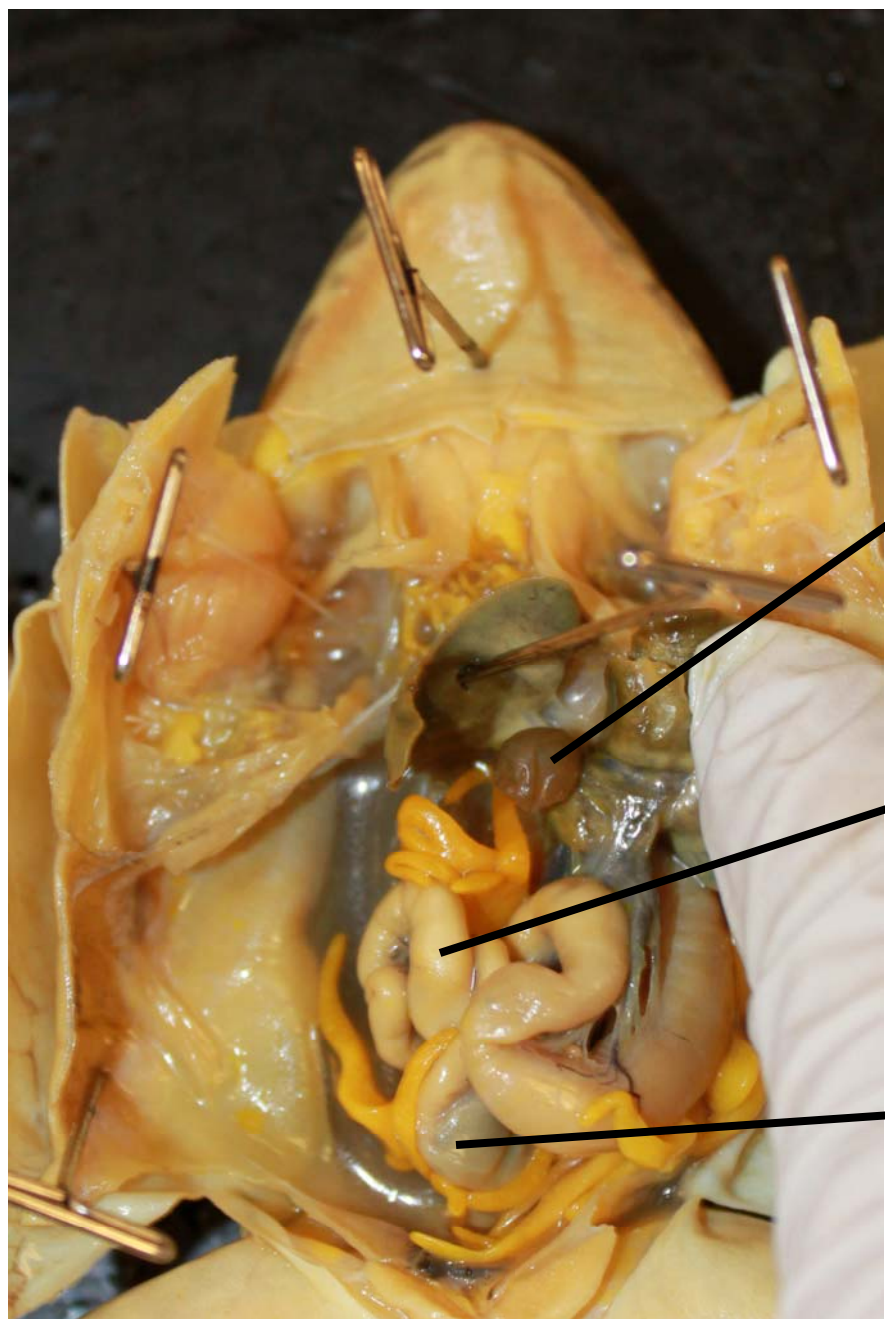


(Ventral View)

(Dorsal View)



# Digestive System

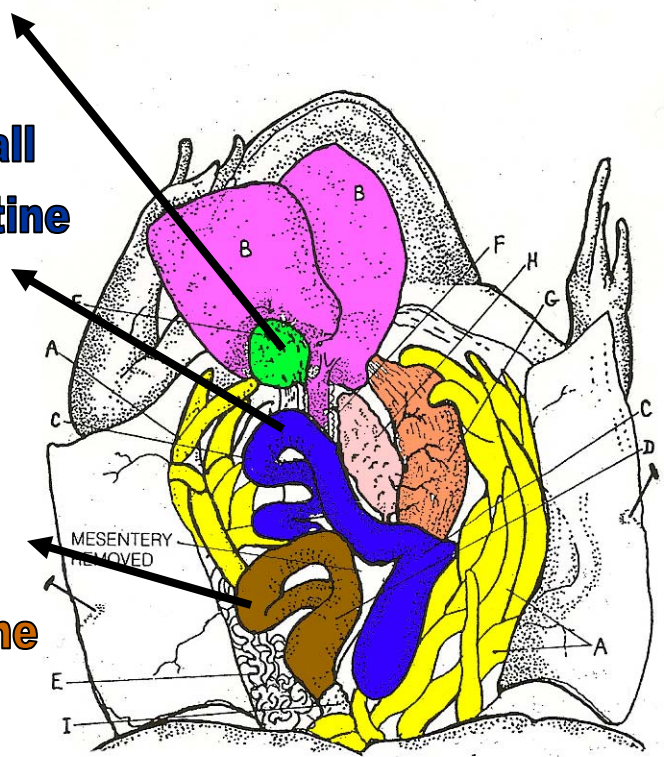


**Gallbladder**

*(Found on the underside of liver)*

**Small Intestine**

**Large Intestine**





**Liver**

**Mesenteries**

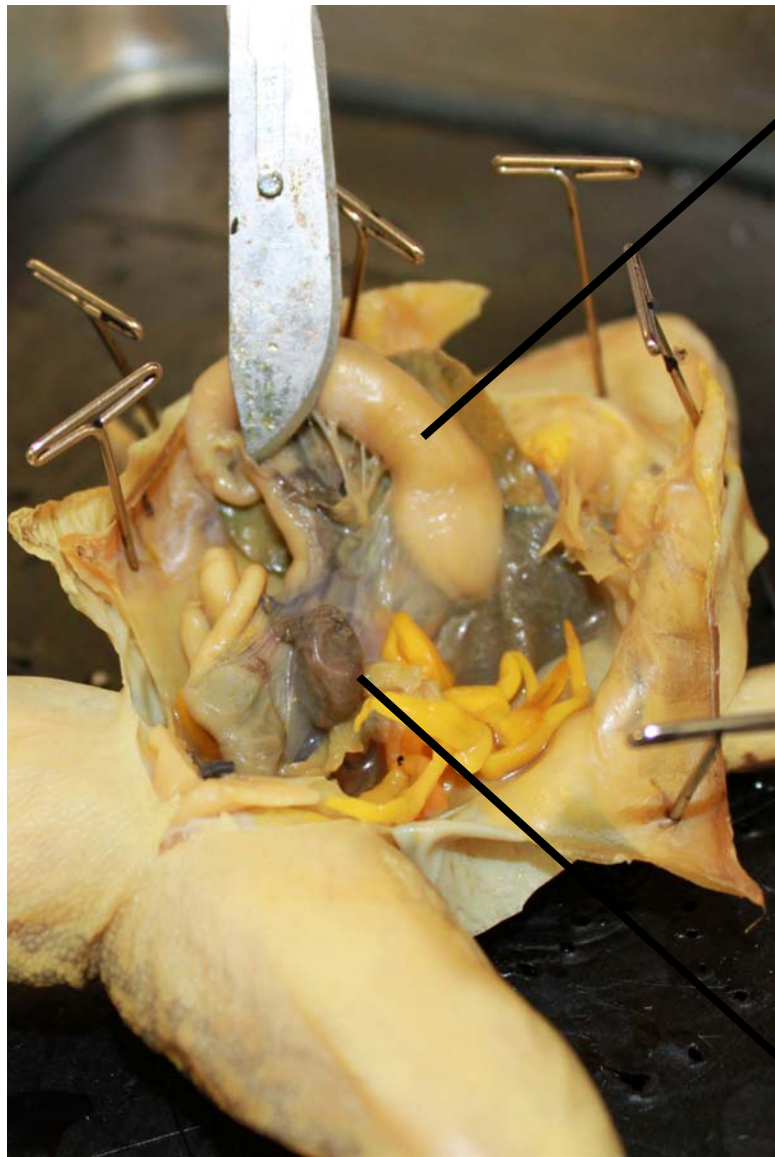


**Gallbladder**

**Small Intestine**

**Digestive System**

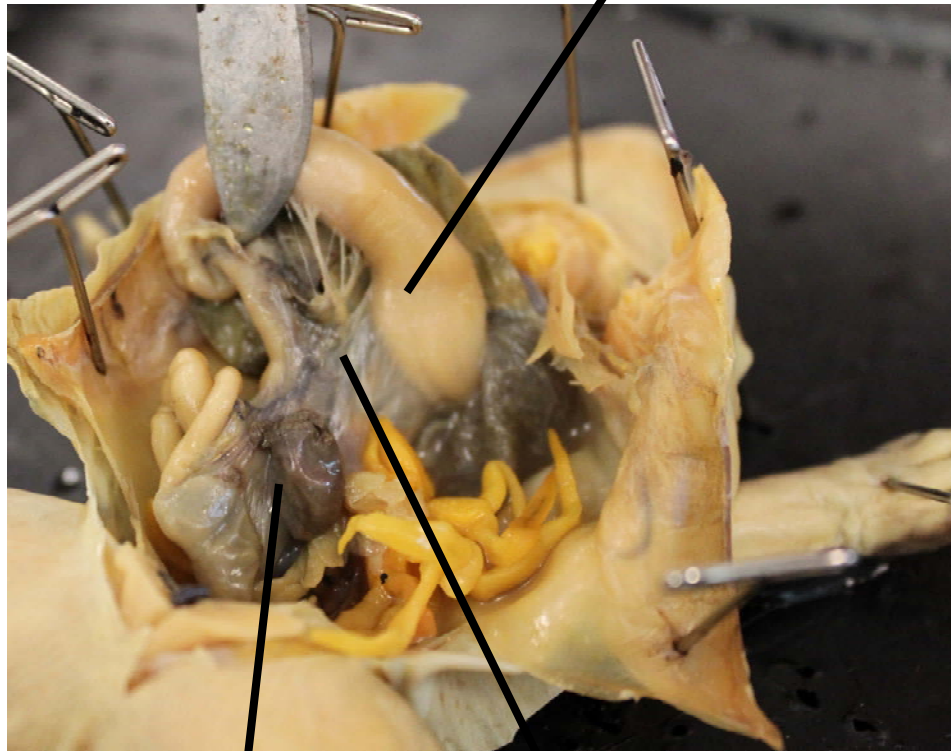




**Digestive System**

**Stomach**

**Stomach**



**Spleen**

**Mesenteries**

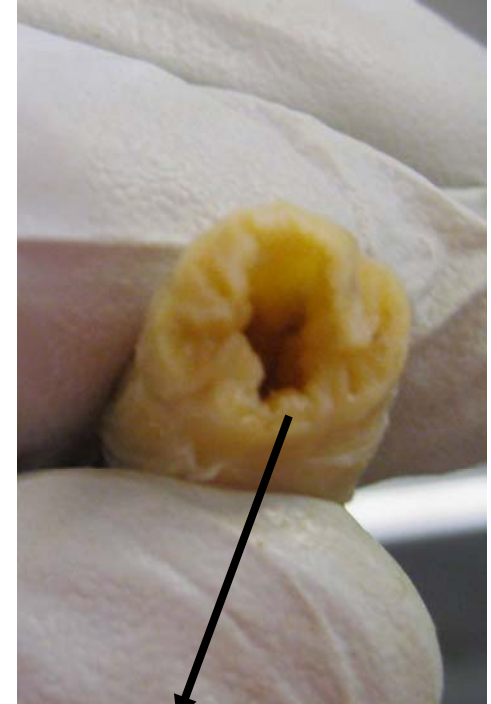
# Digestive System



*(Digestive System  
Removed )*



Mesenteries

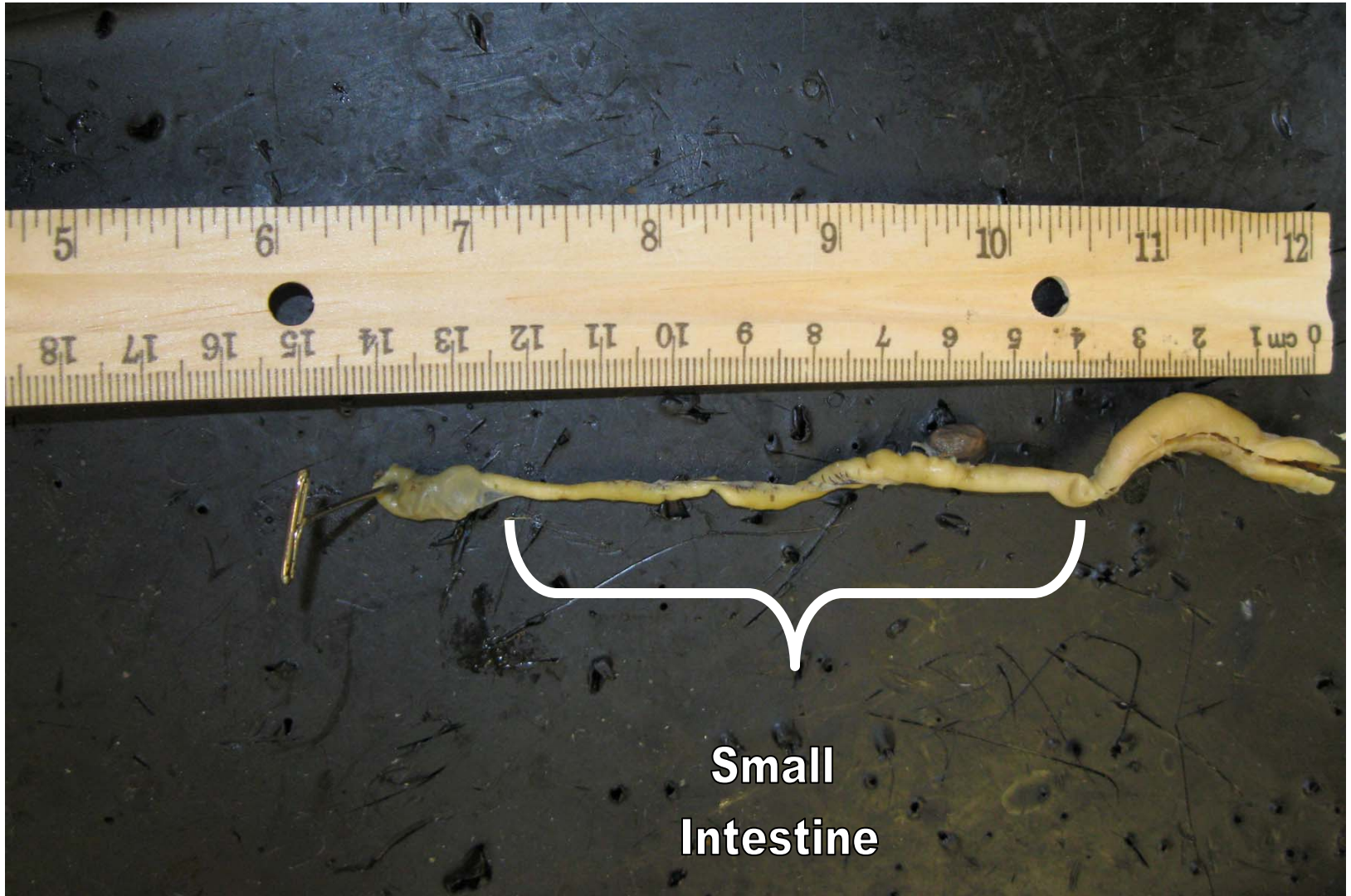


Stomach



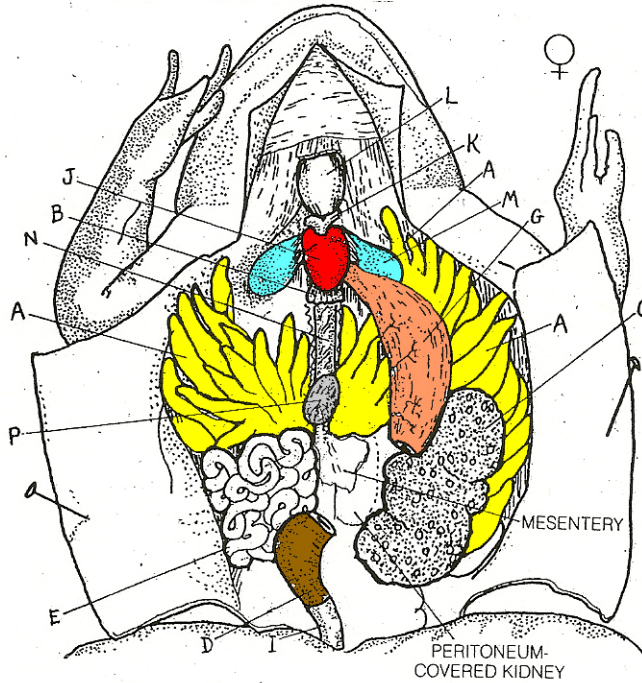


# Digestive System



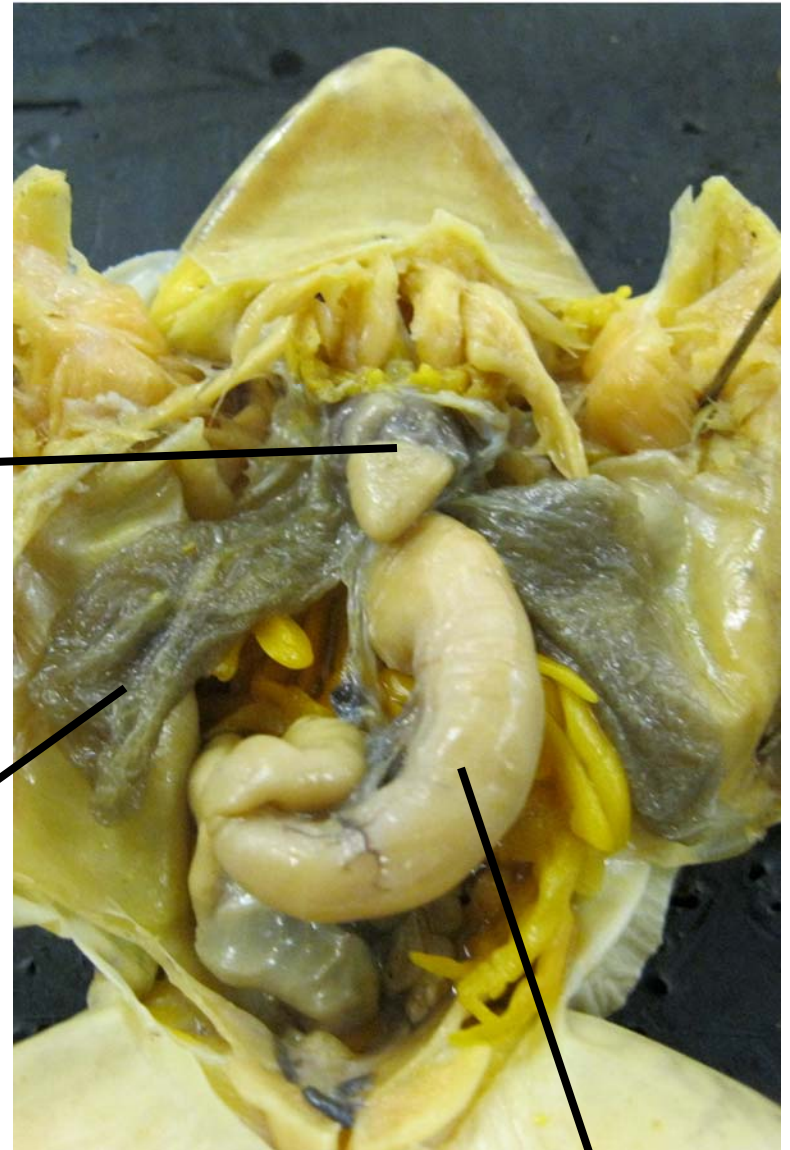


# Respiratory System



**Heart**

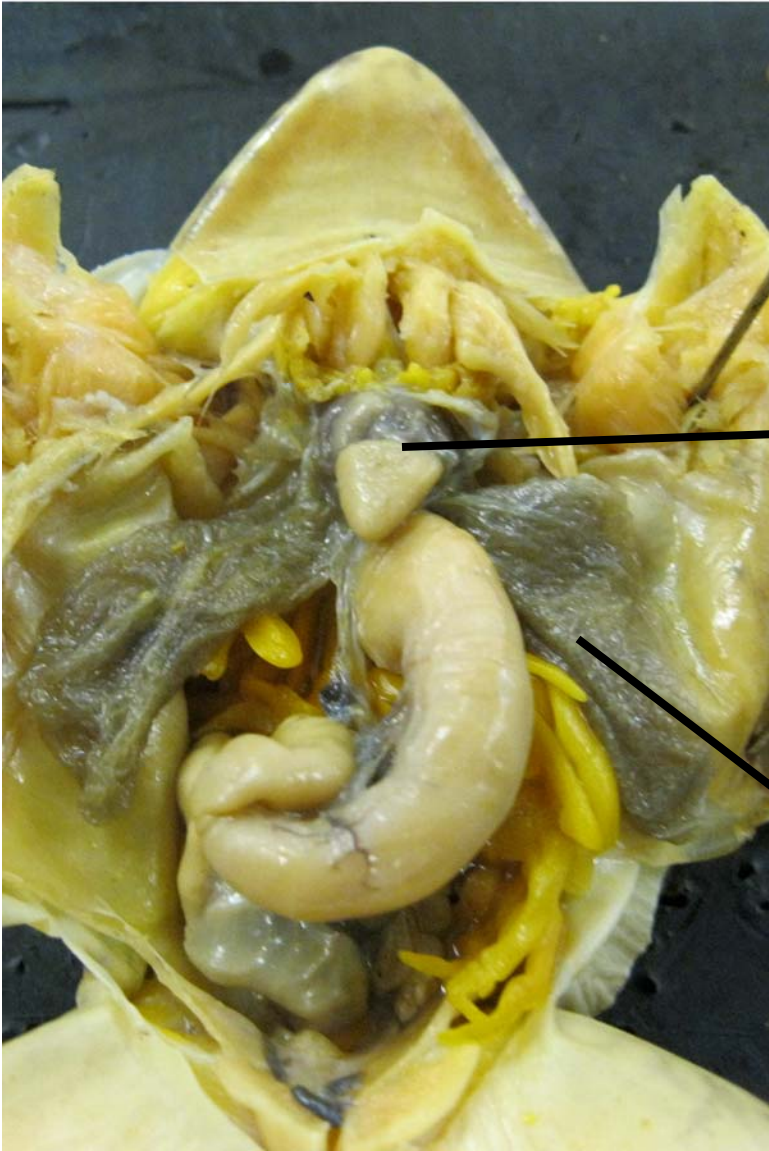
**Lung**



**Stomach**

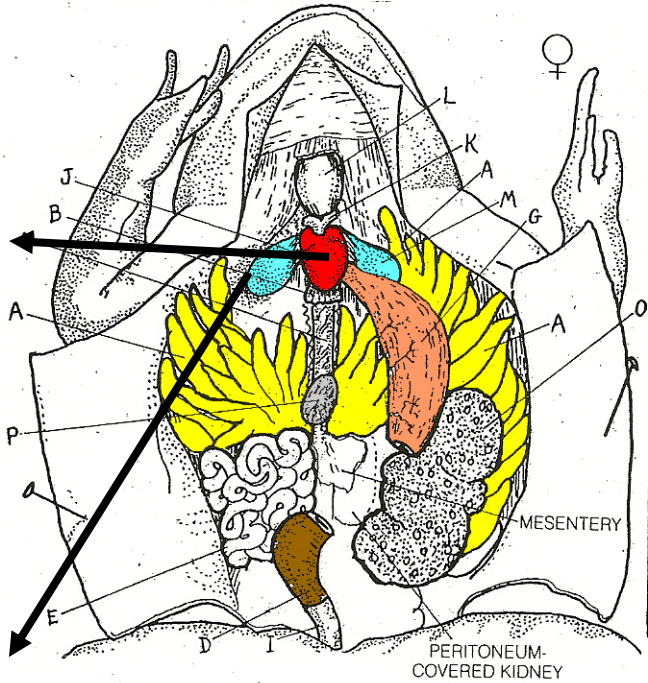
[Frog Lungs](#) video

# Circulatory System



**Heart**

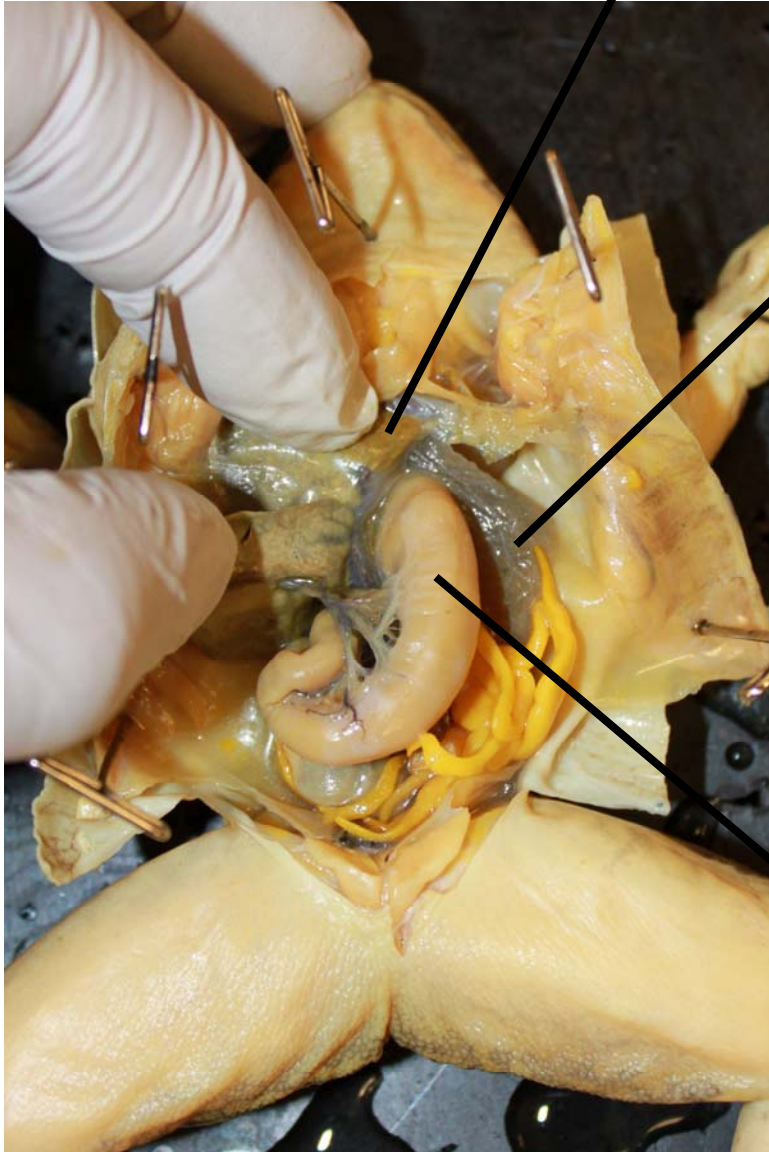
**Lung**





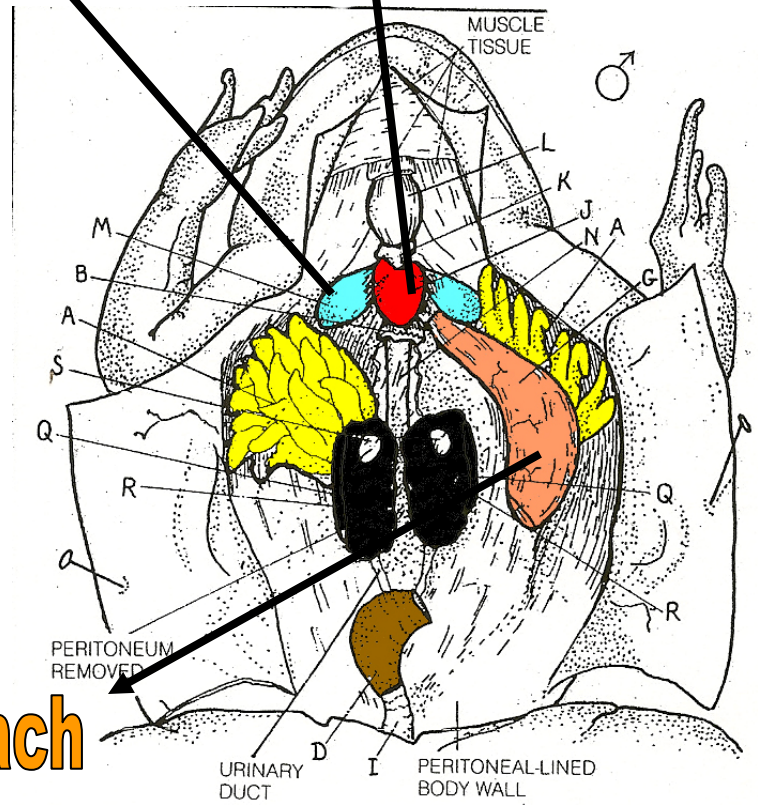
# Circulatory System

**Heart**



**Lung**

**Heart**



**Stomach**



# Heart

## Circulatory System

Right  
Atrium

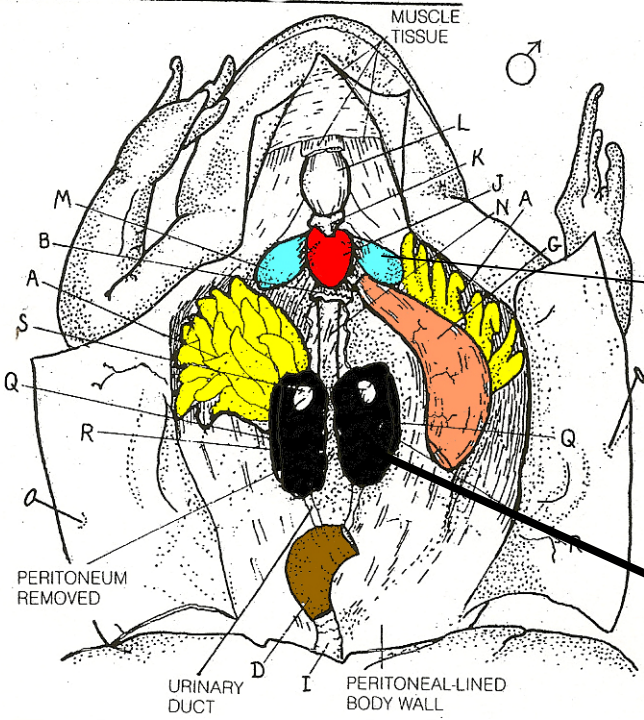
Lung



Left  
Atrium

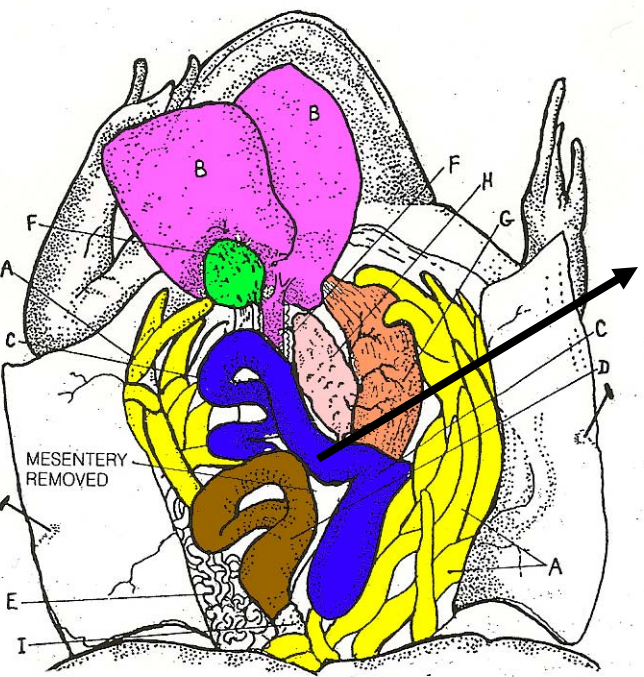
Lung

Ventricle



**Lung**

**Kidney**



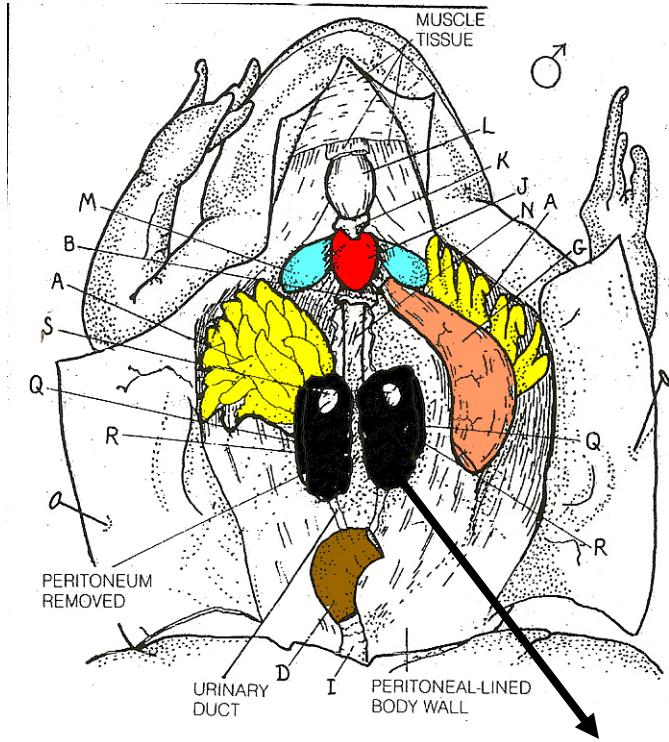
**Small Intestine**

**Excretory System**

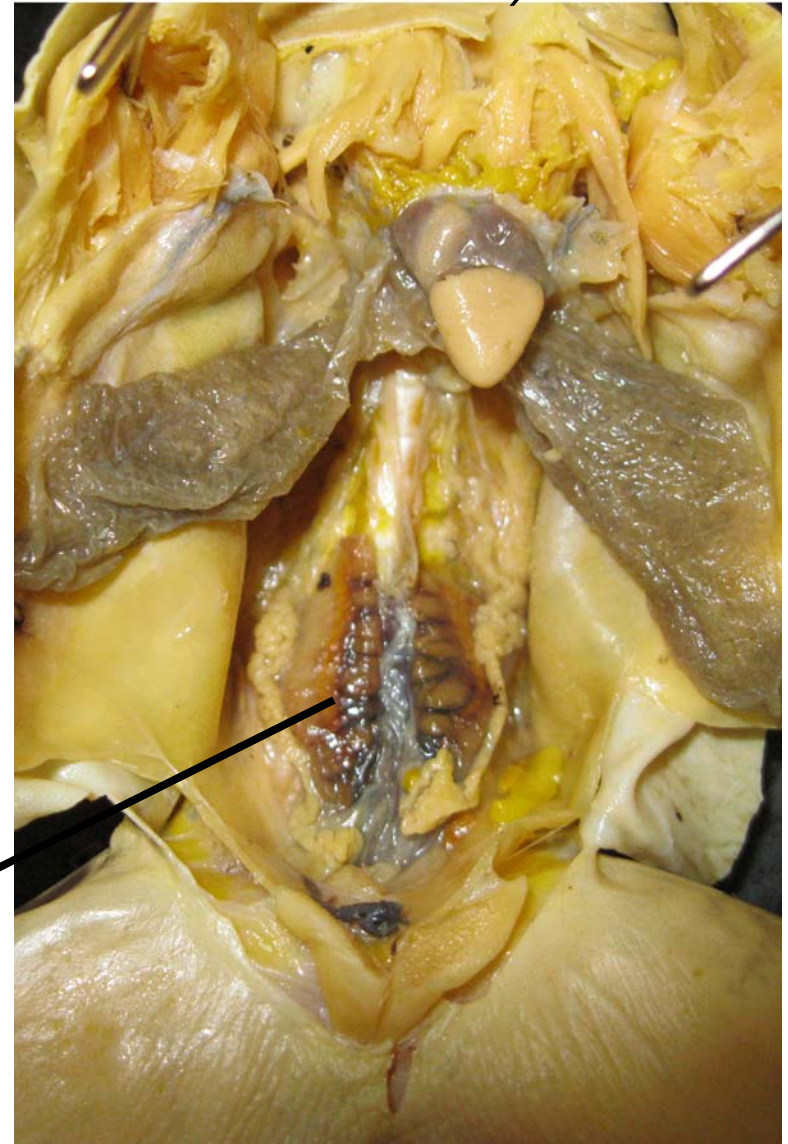




# Excretory System



*(Note: digestive system removed)*



**Kidneys**

# Diagram Color Code

Fat Body A

Gallbladder F

Oviduct E

Testes S

Liver B

Stomach G

Rectum I

Small

Pancreas H

Conus/Truncus  
Arteriosus K

Intestine C

Heart J

Larynx L

Large

Lungs M

Postcaval Vein N

Intestine D

Kidneys Q

Ovary O

Spleen P

Adrenal Gland R