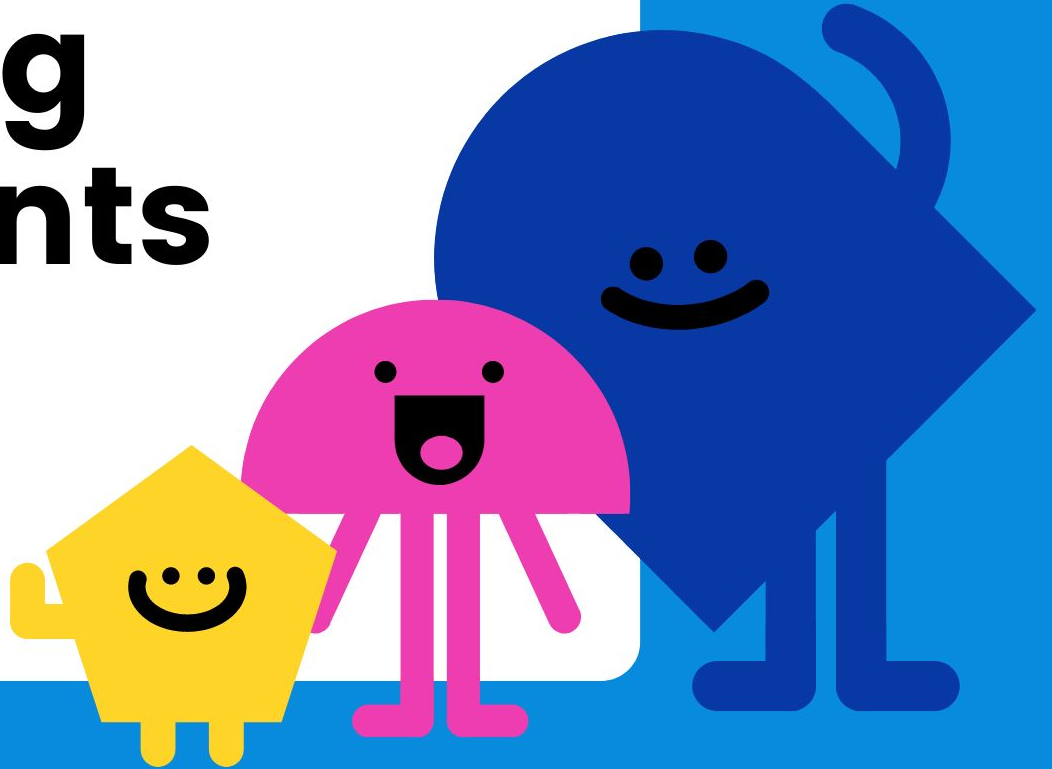


# Students Standing 4 Students

A Presentation To  
Show How Much  
We Care



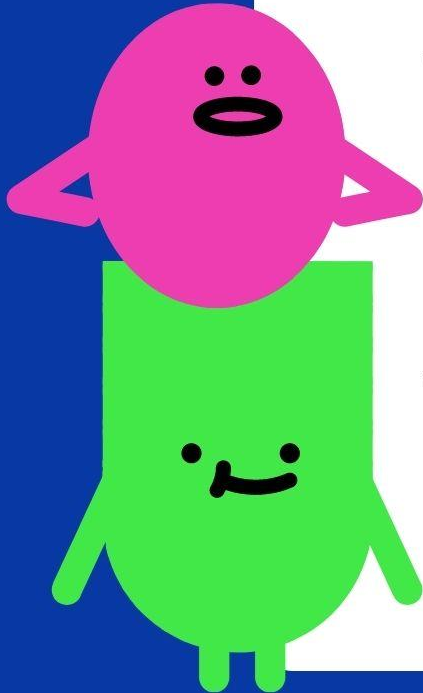
# Students Standing 4 Students

WE AS STUDENTS COLLECTIVELY NOTICE:

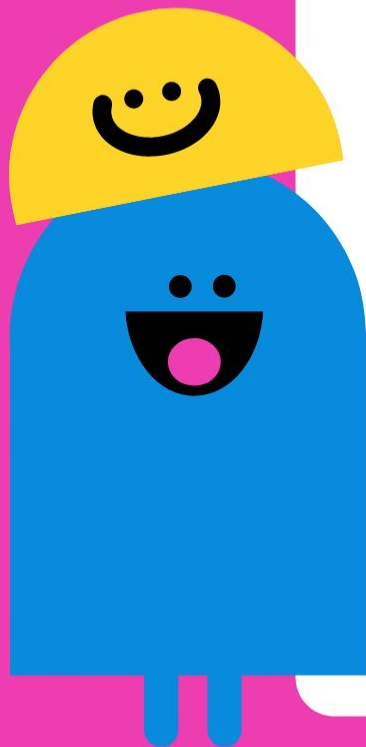
- Bathrooms frequently being closed
- Blatant disrespect towards students, teachers, and faculty
- Destruction of school property
- The need for implementation of a no-go list

WE DECIDED TO TAKE ACTION THROUGH:

- Class discussions
- Meetings with Principal Billingslea
- Collaboration with multiple classes (AVID, Leadership, and Peer mediation)
- Now we are here!!



# RISE Expectations



**R**

**RESPECTFUL:** Communicate, how can we practice this with both adults and peers? Practice talking to classmates with respect and patience and do your part to keep River City clean.

---

**I**

**INCLUSIVE:** Practice kindness and be understanding to everyone you interact with. Check in on friends and peers and be respectful of others' opinions.

---

**S**

**SAFE:** Maintain a COVID-safe environment. Wear your mask properly and practice social distancing as frequently as possible. Walk calmly in the halls and be mindful of others' space.

---

**E**

**ENGAGED:** Practice active listening and participation in your classes. Seek out help when you need it and reach out to your peers.

# Key Issues

## VANDALISM

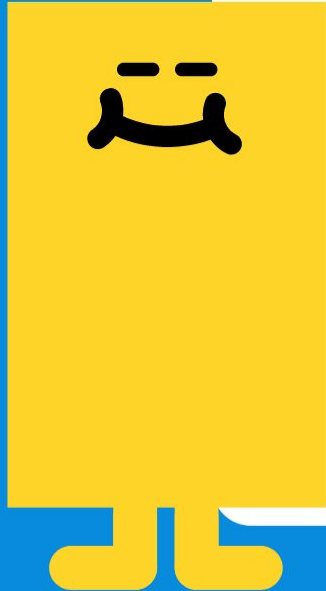
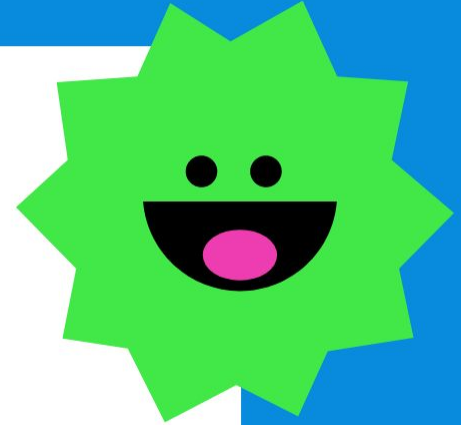
- Bathrooms
- Classrooms (tampering with the class temperature, leaving food and trash around)
- Hallways (running, playing around, and standing around)
- Cafeteria (throwing food)
- Stealing
- Destroying (bathrooms, trashing the locker rooms & the bleachers)

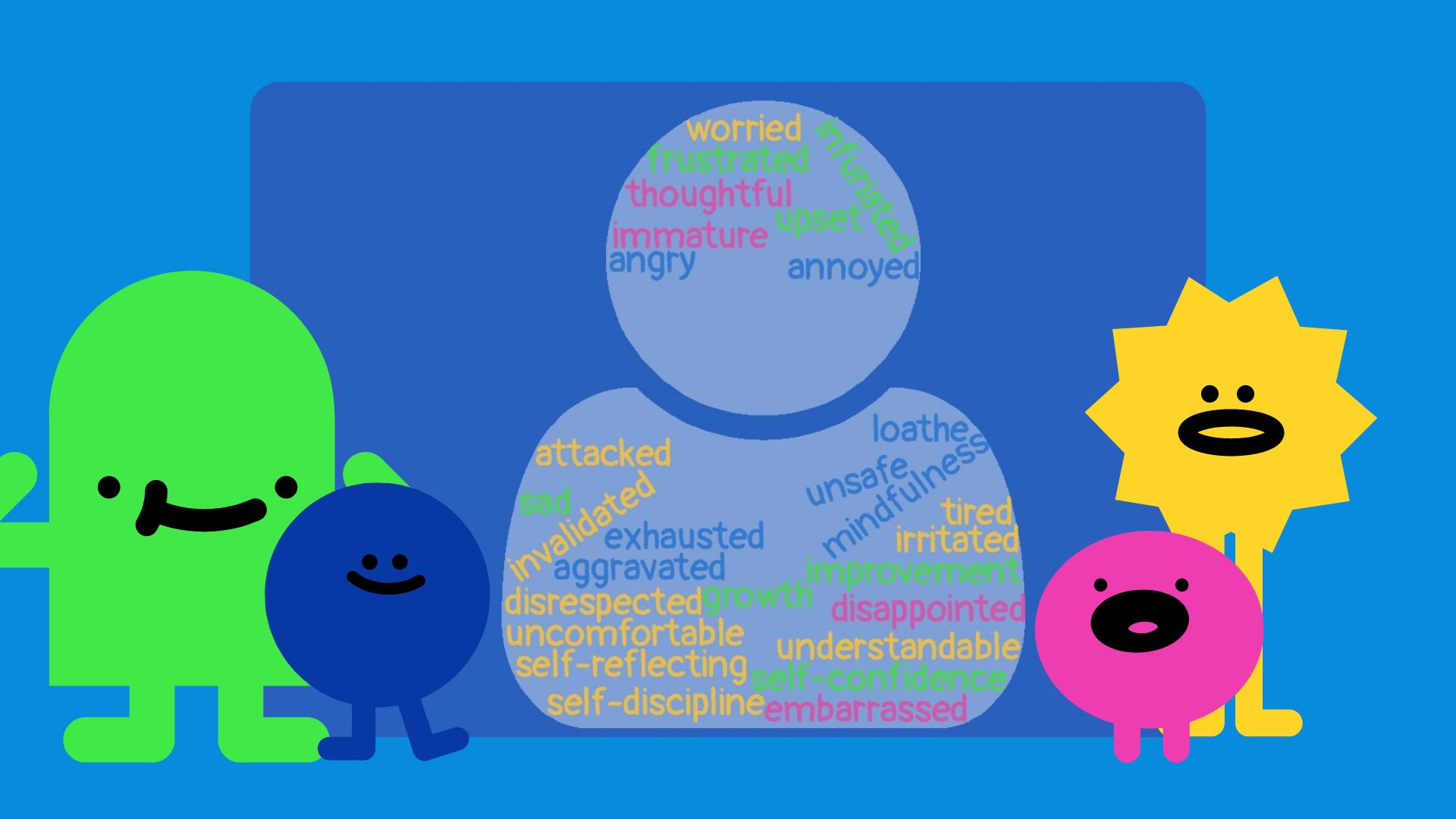
## DISRESPECT

- Teachers
- Janitors
- Cafeteria Staff
- School Environment
- Other Students
  - Disregarding others' efforts in being safe and respectful

## IRRESPONSIBILITY

- COVID-19 Regulations
- Engaging with other individuals
- Towards other student's education
- A safe environment for everyone





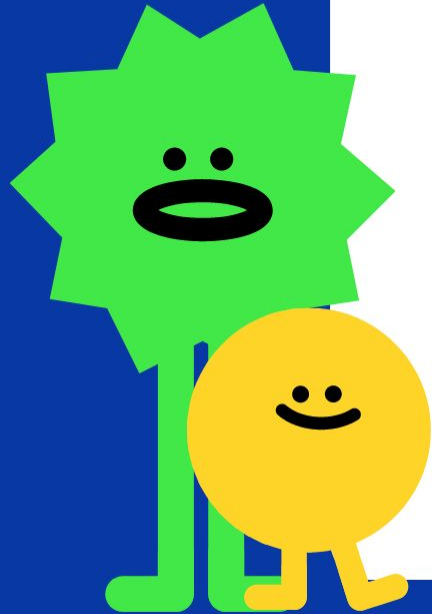
worried  
frustrated  
thoughtful  
immature  
angry  
infuriated  
upset  
annoyed

loathe  
unsafe  
mindfulness  
tired  
irritated  
improvement  
disappointed  
understandable  
self-confidence  
embarrassed  
self-discipline  
self-reflecting  
uncomfortable  
disrespected  
aggravated  
exhausted  
invalidated  
sad  
attacked  
growth

# Day to Day

What It Is and What It Should Look Like

- Students should arrive on time ready to learn and maintain a safe environment for themselves and their peers.
- Masks should be worn properly (over your nose AND mouth) in the halls, classrooms, and in close proximity to other students.
- Halls should be a safe place for students to walk to their classes, walk calmly and practice mindfulness in regards to others' space.
- The destruction of property is completely unacceptable and should not be encouraged.
- Staff (lunch attendants, campus aids, teachers, etc) should be treated respectfully when they are trying to do their jobs.

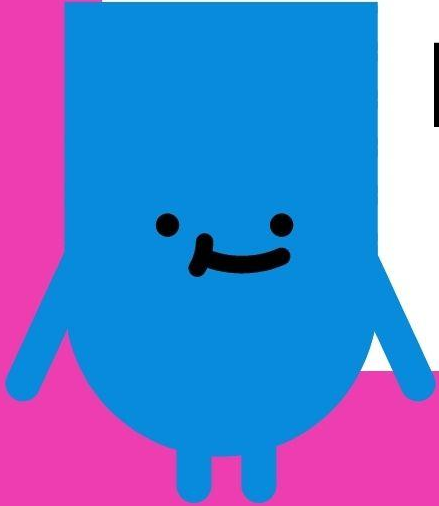




# Take the Pledge!



Scan the QR code and fill out the Google Form to show how you will contribute!



# Exit Ticket

After we leave, please fill out the link to [this](#) Google Form!

